

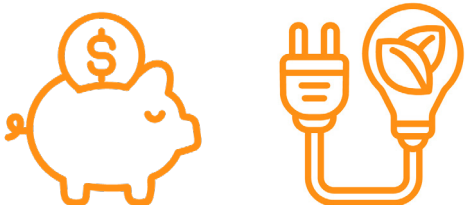


KAIZEN FDD FOR AN OUTPATIENT HOSPITAL

CLIENT OVERVIEW

A new, roughly 120,000 sq. ft. state-of-the-art Outpatient Hospital in Australasia that houses more than 20 different services under one roof adopted CopperTree's FDD solution to assist the operations team in improving the building performance. The goal of the project was to integrate the FDD solution into the operator workflow so that Insights from Kaizen can empower the operators.

BENEFITS



Just from chiller optimization, CopperTree Kaizen identified 100,000 kWh in energy savings and \$12,000/year in cost savings.



THE PROJECT

Among other systems, this building has two Chillers that provide chilled water to 10 Air Handling Units (AHUs) and some other cooling systems. The AHUs are distributed across 5 floors. Chillers are one of the most energy intensive systems in the building, and any improvements to the chiller operation will provide substantial cost savings.

THE CHALLENGE

Data from the BAS was grouped and tagged using CopperTree's technology to quickly bring in the points of interest into the analytics front-end. FDD rules were applied on all systems including Chillers and it was identified that both chillers were operational for long periods of time while Outdoor Air Temperature (OAT) was below the lockout temperature.

THE SOLUTION

Data from the BAS was grouped and tagged using CopperTree's technology to quickly bring in the points of interest into the analytics front-end. FDD rules were applied on all systems including Chillers and it was identified that both chillers were operational for long periods of time while Outdoor Air Temperature (OAT) was below the lockout temperature. This was due to the fact that their schedules were set to be running approximately 12 hours a day, regardless of outdoor conditions.